

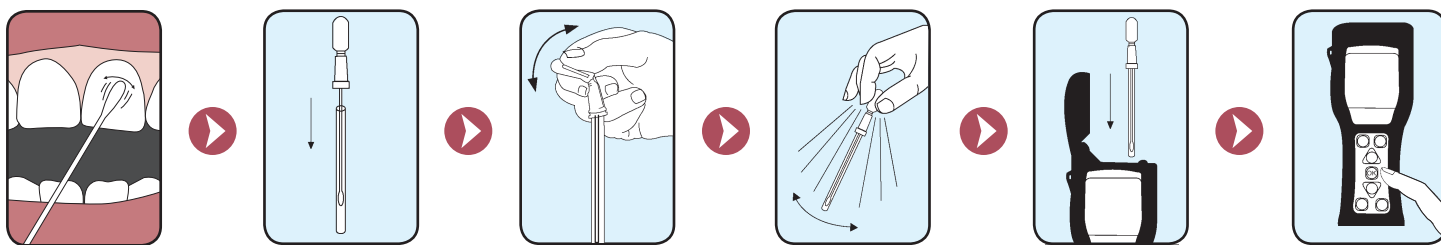
# DIRECTIONS FOR USE OF: CariScreen Caries Susceptibility Testing Swab with CariScreen Caries Susceptibility Testing Meter

CariScreen™ 

## GENERAL DESCRIPTION

The CariScreen Swab sampling device is a self-contained ATP device for use with the CariScreen Caries Susceptibility Testing Meter. This system is used as a screening for the presence dental caries. The CariScreen Meter in conjunction with the CariScreen Swab measures adenosine triphosphate (ATP), the universal energy molecule found in all animal, plant, bacterial, yeast, and mold cells.

When ATP is brought into contact with the unique liquid-stable luciferase/luciferin reagent within the CariScreen Swab sampling device, light is emitted in direct proportion to the amount of ATP present. The CariScreen meter measures the amount of light generated and provides information about the potential levels of cariogenic bacteria present in the biofilm.



## 1 COLLECTING SAMPLE

When collecting a sample make sure to use aseptic techniques. Do not touch the swab or the inside of the sampling device with fingers. The patient **should have a mouth at rest**, which in general terms means no mechanical activity, brushing, flossing, swishing, coughing, chewing, eating etc. for a period of 60 minutes prior to the test.

Holding the swab tube, twist and pull the top of the swab out of the swab tube. The swab tip comes pre-moistened with a detergent. Condensation may be visible on the inside of the swab tube, this is normal. Carefully swab the buccal surface of a maxillary molar in the middle third **without touching the gingiva** with the swab tip. Swab the tip across the tooth surface **three times** (not two and not four) from mesial to distal. Use the maxillary right first molar if it is present; if not present, select the second molar or premolar to swab instead. Using the same swab, carefully swab a maxillary incisor in the gingival third with the same protocol: swab **three times** (not two and not four) across the surface from mesial to distal **being sure not to contact the gingiva**. Use the maxillary right central incisor if it is present; if not present, select another incisor and swab it with the same protocol. After swabbing the desired test area, place swab back in swab tube. **Once activated the sample must be read in the meter within 60 seconds.**

## 2 ACTIVATING DEVICE

To activate the device, hold the swab tube firmly, use the thumb and forefinger to break the Snap Valve by bending the bulb forward and backward. Squeeze the bulb twice, expelling all liquid down the swab shaft. Bathe the swab bud in liquid by gently shaking for 5–10 seconds.

## 3 READING RESULTS

Insert the CariScreen Swab device into the CariScreen meter, close lid and read the results by pressing "OK". A 15-second sequence will then commence. Results should be read within one minute of activation of the CariScreen Swab device. Please refer to the CariScreen meter manual for operating instructions.

## 4 INTERPRETING RESULTS

The reading will appear on the screen as a number of RLUs (Relative Light Units 1–9999). Record this number for the patient on the Data Collection Form. Values correspond to level of risk as follows:

0–1500 = low risk  
1501–9999 = at risk

## 5 PRECAUTIONS AND WARNINGS

- The CariScreen is one component of the complete CariFree Caries Risk Assessment and Treatment System. It is a screening test only and represents just one data point for the patient. Caries diagnosis decisions should include all relevant data points including the caries risk assessment form, risk factors, caries history, bacterial culture results, oral exam, radiographic exam and professional judgment. For the ADA Council on Scientific Affairs risk category parameters for dental caries please refer to [http://www.ada.org/prof/resources/pubs/jada/reports/report\\_fluoride/pdf](http://www.ada.org/prof/resources/pubs/jada/reports/report_fluoride/pdf).
- Hold the CariScreen meter upright when taking readings.
- Hold CariScreen Swab device upright when activating.
- Read CariScreen Swab sampling device within one minute of activation.
- Keep CariScreen Swab out of direct light when possible.

## 6 STORAGE

CariScreen Swab sampling devices must be refrigerated at 2–8 degrees C (35–46°F). Sample devices should be left out at room temperature for 2 to 5 minutes before being used.

## 7 MORE INFORMATION

If more information is required, please contact Oral BioTech at:

**Oral BioTech™**  
812 Water Ave. NE  
Albany, OR 97321  
Phone: 866-928-4445  
Fax: 541-928-2444  
Email: [info@carifree.com](mailto:info@carifree.com)